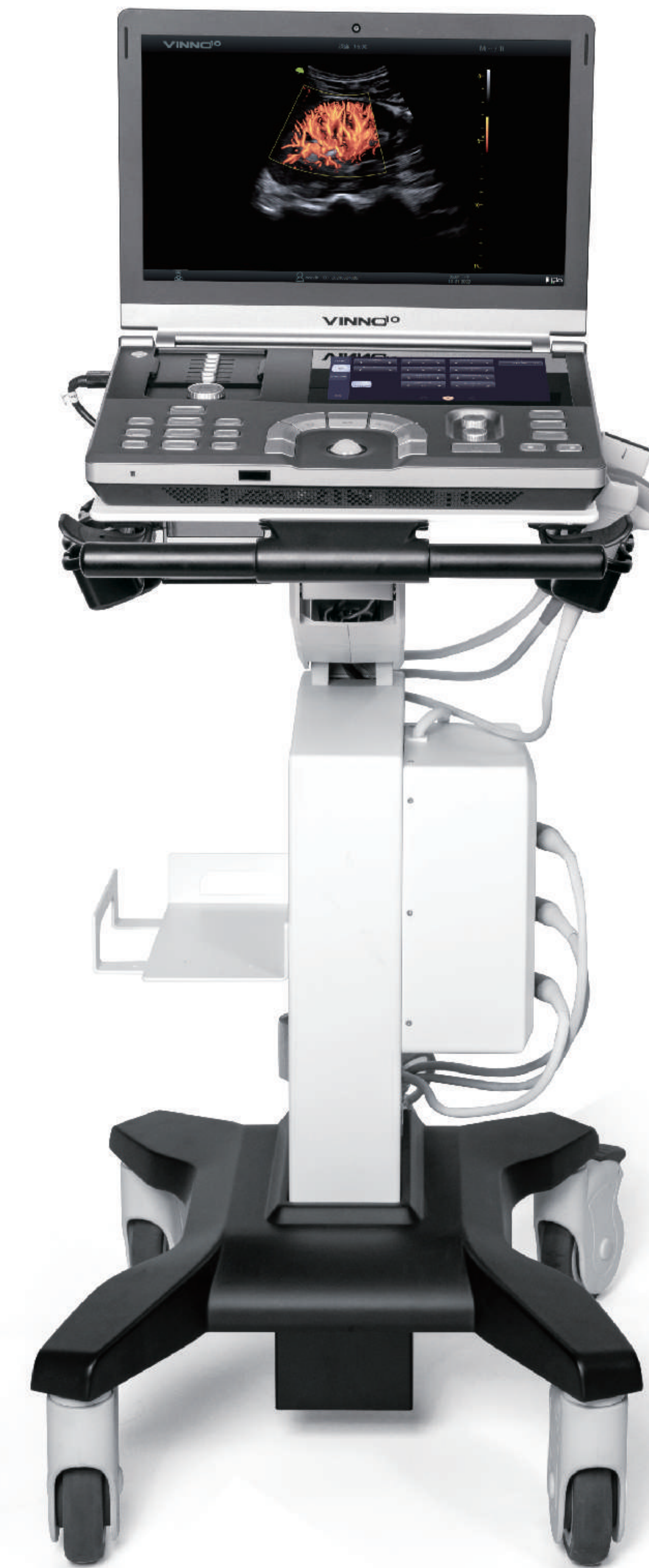


VINNO^{IO}

Premium Compact Ultrasound Wherever You Need It



VINNO Technology (Suzhou) Co., Ltd.

5F, A Building, No.27 Xinfu Rd, Suzhou Industrial Park, 215123, China
Tel: +86 512 62873806
Fax: +86 512 62873801
E-Mail: vinno@vinno.com
URL: www.vinno.com

VINNO reserves the right to make changes to product specifications at any time.

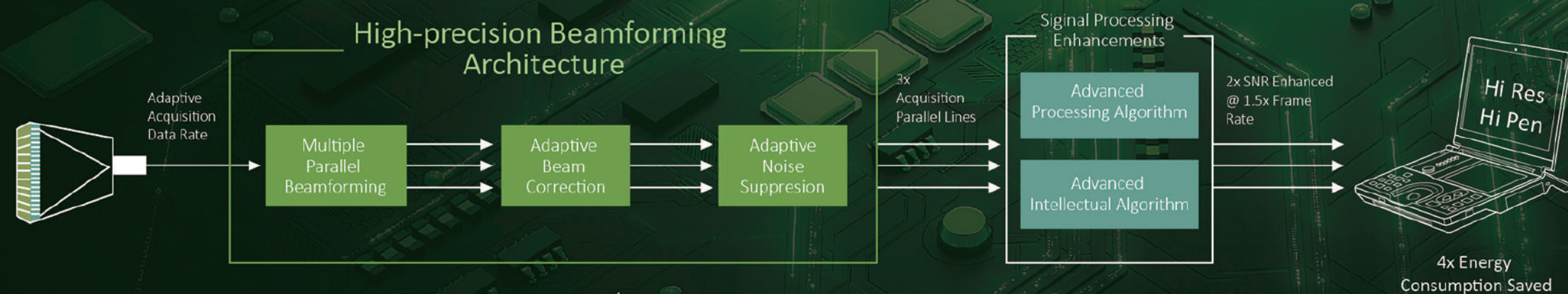


General Imaging Version

DESIGNED FOR HIGH EXPECTATIONS

The V10 portable ultrasound system has been thoughtfully designed to overcome the challenges from everyday healthcare environment.

With enhanced image quality based on VLucid⁺ platform, well designed workflow and smart automation tools, V10 provides the best-in-class image quality and supports clinicians from Critical Care, Emergency and Anesthesia to General Imaging.



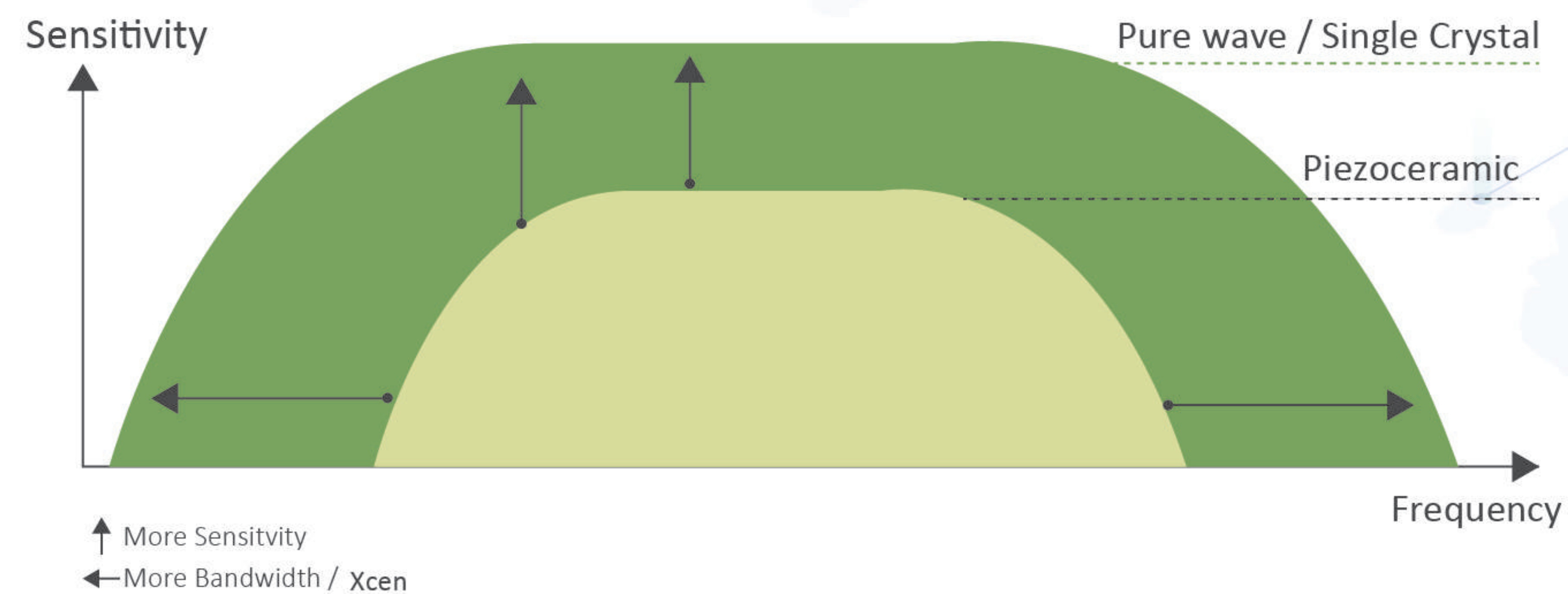
* The improvement of VLucid⁺

PureWave Single Crystal & XCen probes offers wider bandwidths for penetration & clarity

- Improved conversion efficiency
- Improved axial resolution
- Improved sensitivity for deeper structure and clearer imaging



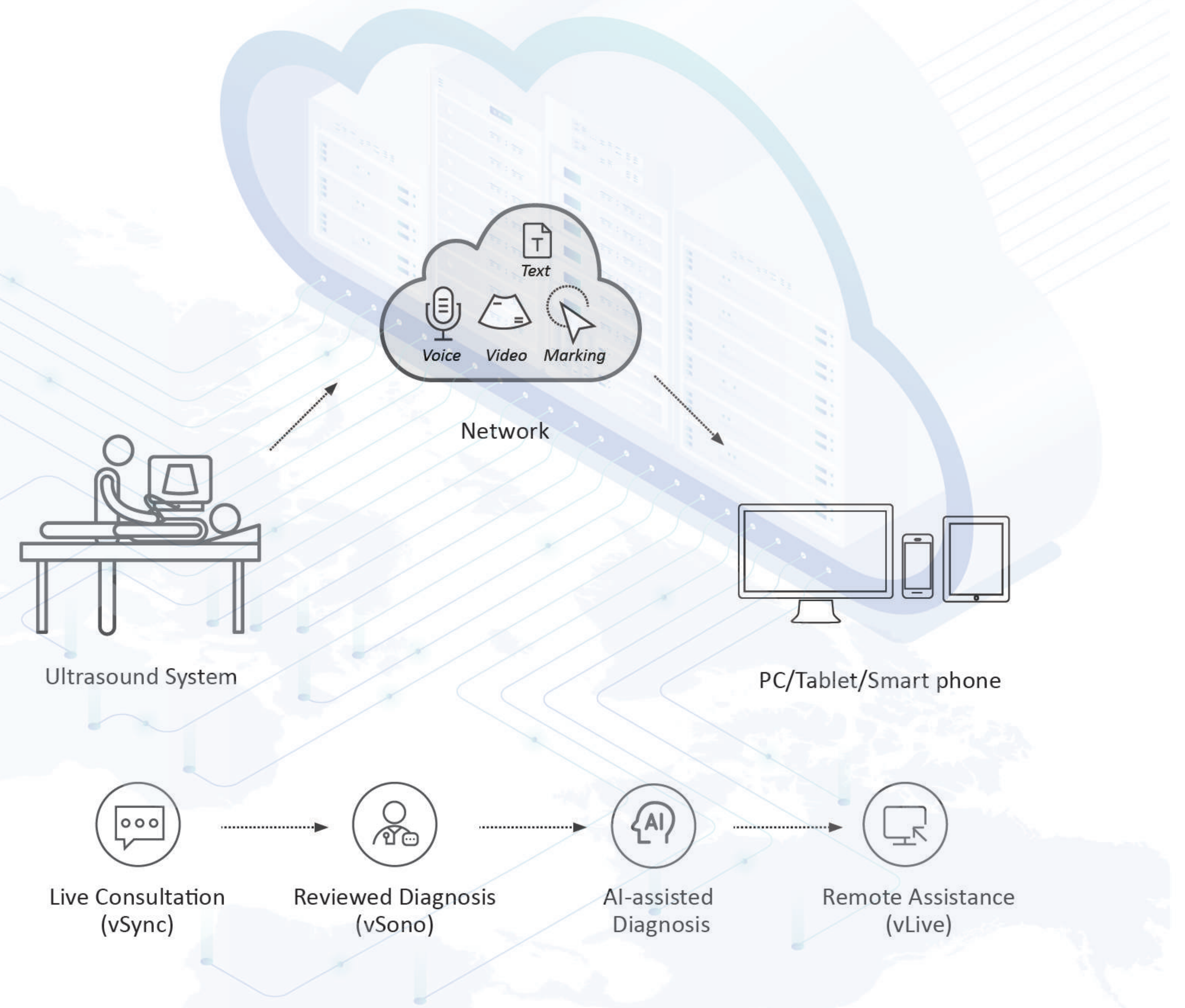
* More probes are available for multi-applications.



FLYINSONO

Connect anytime, from anywhere, at any terminal

Flyinsono is the pioneer of Remote Ultrasound Imaging Solution. Endorsed by Cloud technology, Flyinsono can realize Remote Consultation, Intelligent Diagnosis, Remote Quality Control, Online Training, Remote Service, Academic Seminars and etc. Flyinsono breaks down geographical, traffic and personnel barriers, and provides real-time or time-sharing services to remote medical facilities. Especially with the AI-based diagnostic tools, physicians can significantly improve their diagnostic efficiency and accuracy.



Clinical Solution



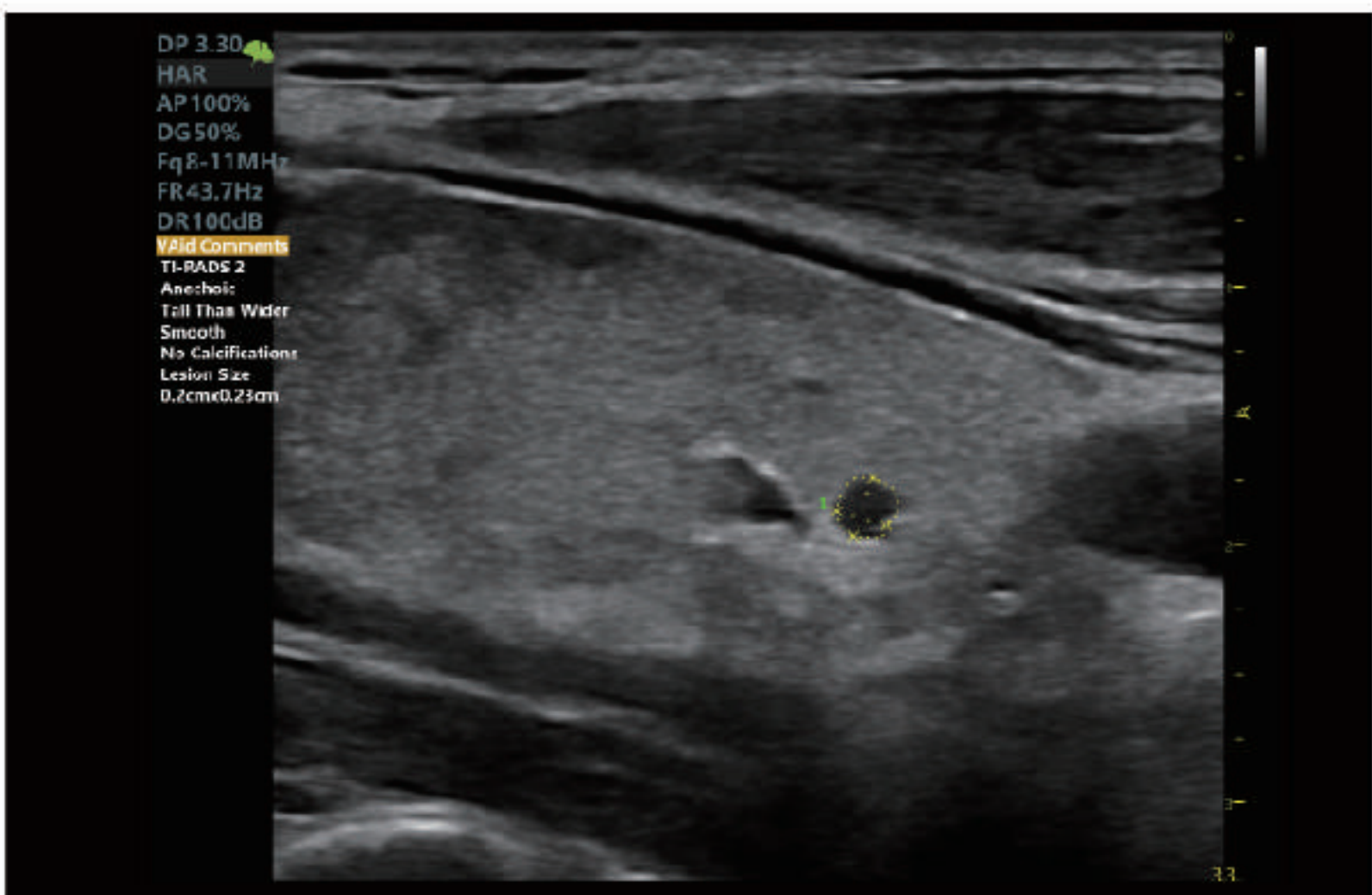
VAid Liver

An automatic detection of focal and diffuse diseases of liver in real-time or on stored images and displays quantitative analysis of the lesion.



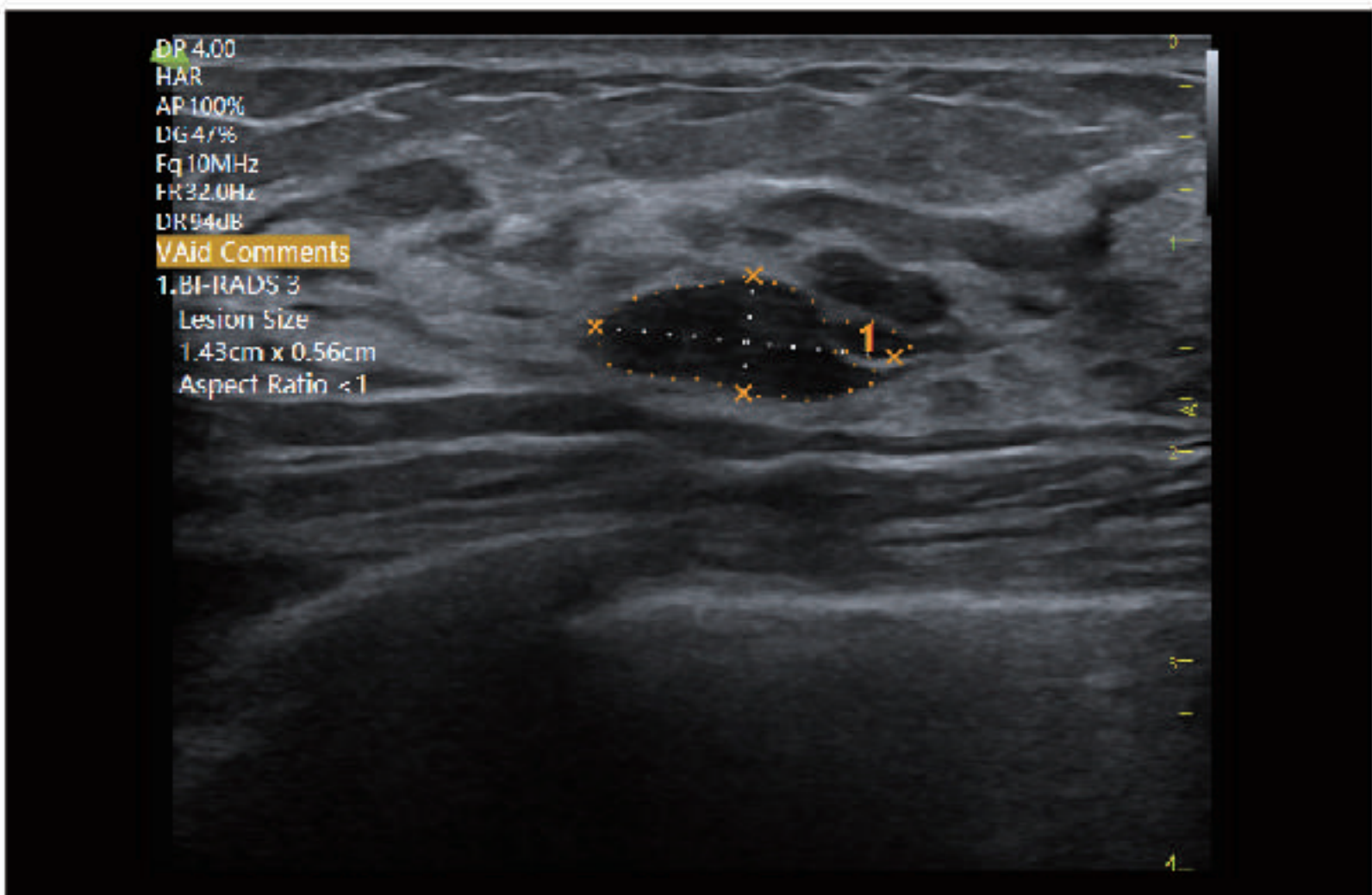
VAid Thyroid

Thyroid nodule are detected in real-time or on stored images, together with TI-RADS categorization and reporting tool, making clinical routine of thyroid ultrasound more accurate and productive.



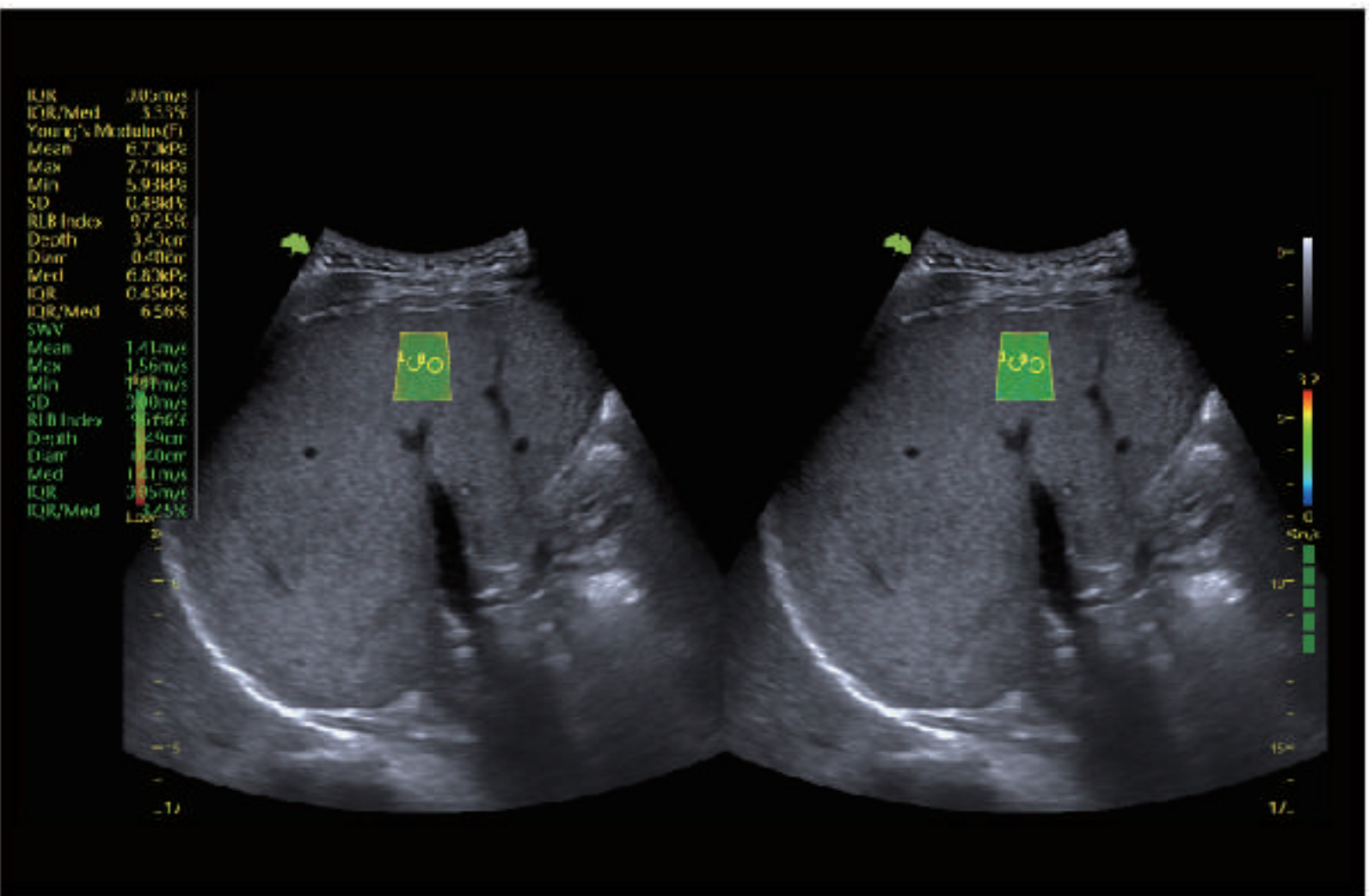
VAid Breast

Automatic breast screening and lesion detection in real-time or stored images, along with the smart BI-RADS analysis, effectively improves quality control.



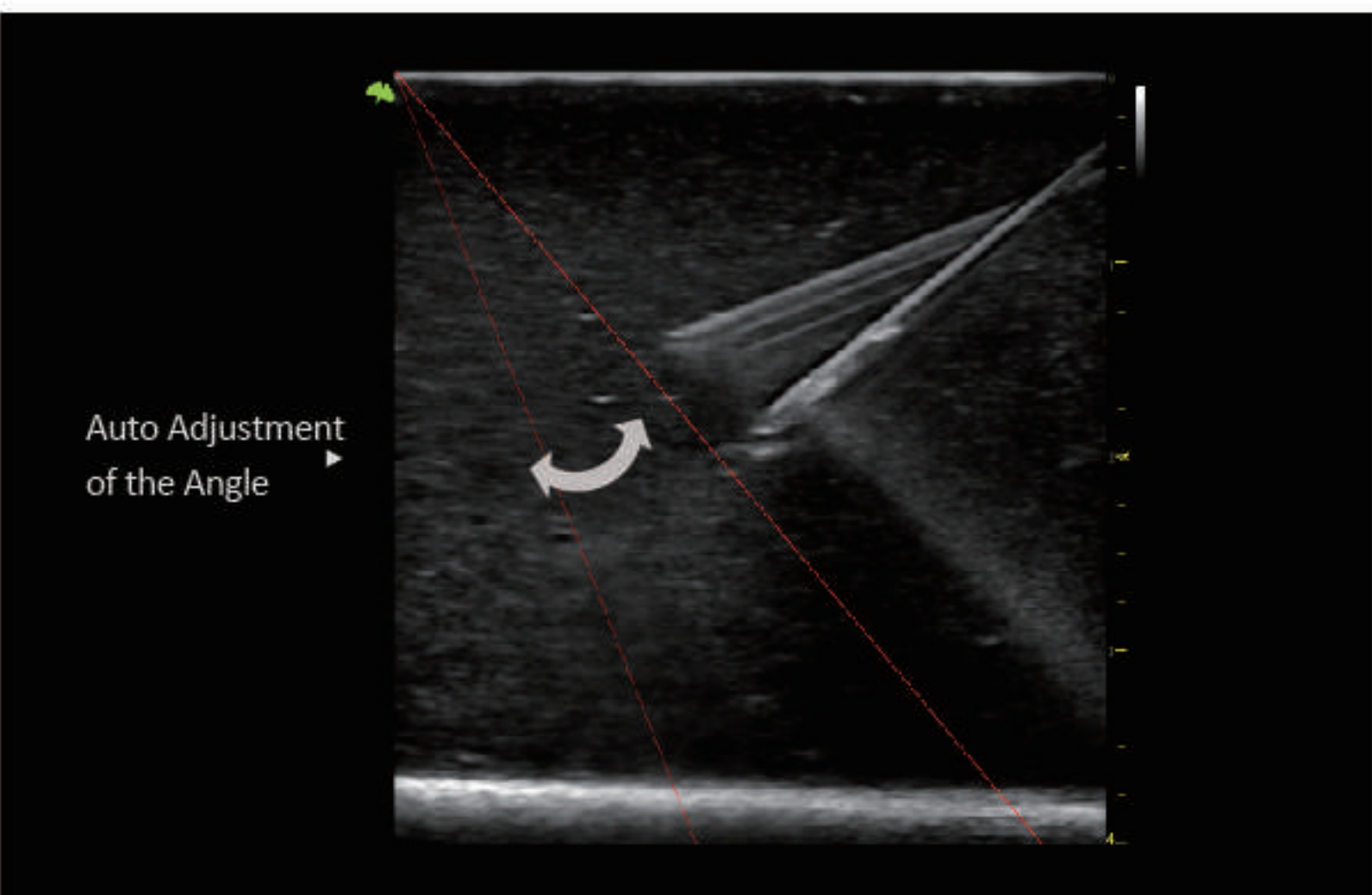
VShear (Shear Wave Elastography)

SWEI is a non-invasive assessment of stiff tissues in various applications. The color-coded elastogram, quantitative measurements, and user-selectable ROI functions are especially useful for accurate diagnosis of breast, liver, MSK, thyroid and prostate diseases.



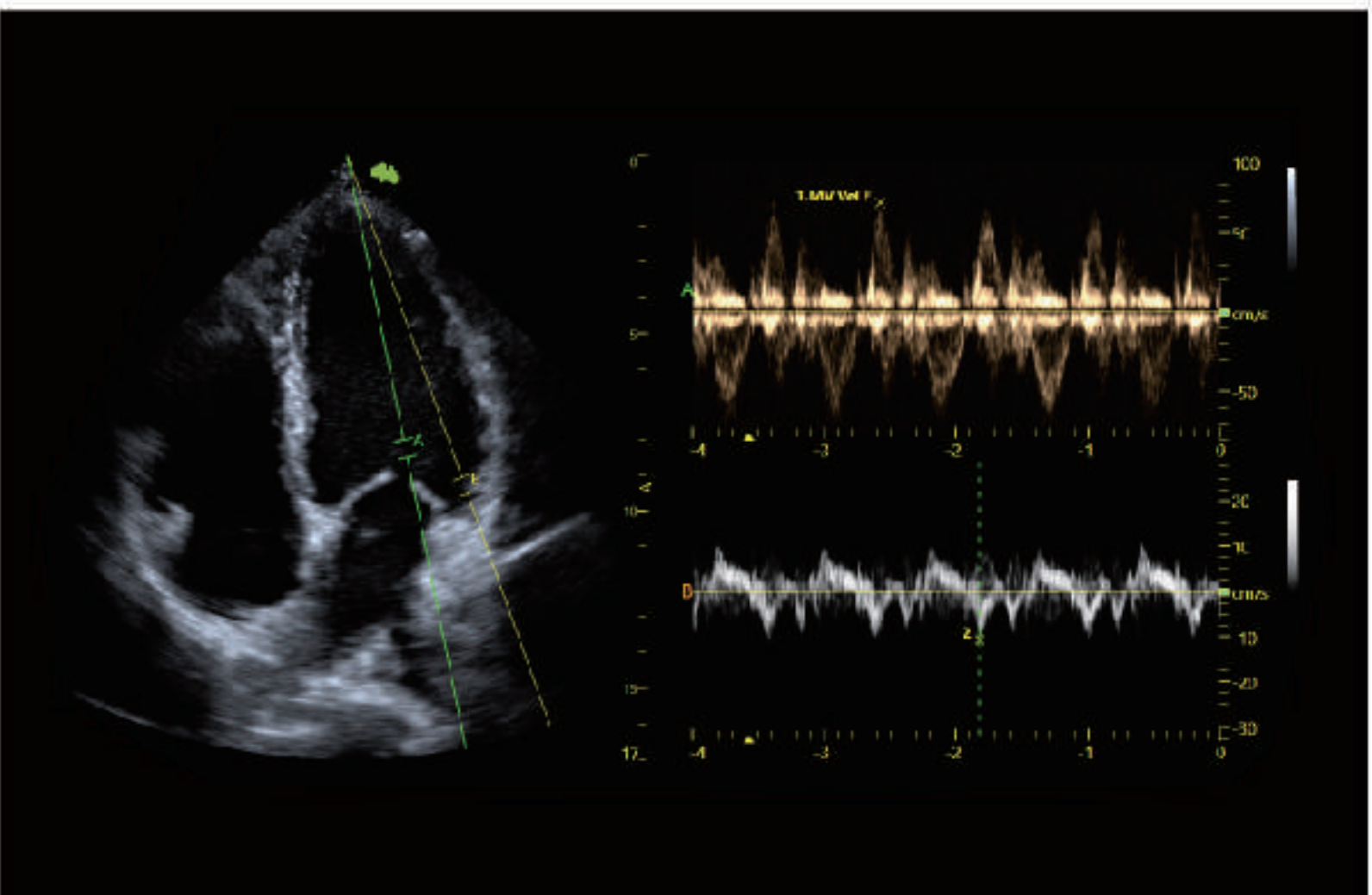
Auto Needle Enhancement

Allows the needle increased visibility even during steep-angled procedures, while maintaining superior image quality. Improved confirmation of needle location in tissue minimizes harm to surrounding tissue.



Multi Doppler

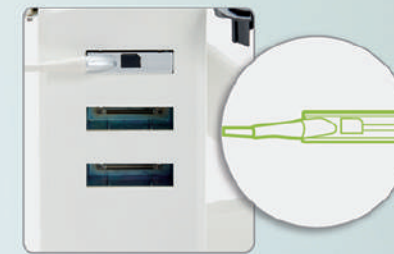
The combination of TDI and PW allows simultaneous evaluation of wall motion, asynchronies and hemodynamics, with up to 4 sample gates for vascular and 2 sample gates for cardiac on same cardiac cycle cardiac cycle, enabling faster and accurate measurement of LV diastolic dysfunction, asynchronies etc. Using the combination of PW/PW, PW/TDI, TDI/TDI.



Innovative Design

VINNO^{1.0}

- Powered by advanced VLucid technology
- Excellent mobility to scan anywhere
- Premier imaging performance
- Dedicated and professional solutions
- Intuitive interface



Up to 3-probe Extension
(optional)



Battery Indicator

The light indicator will be illuminated after the battery is set in place.



4 Probe Holders

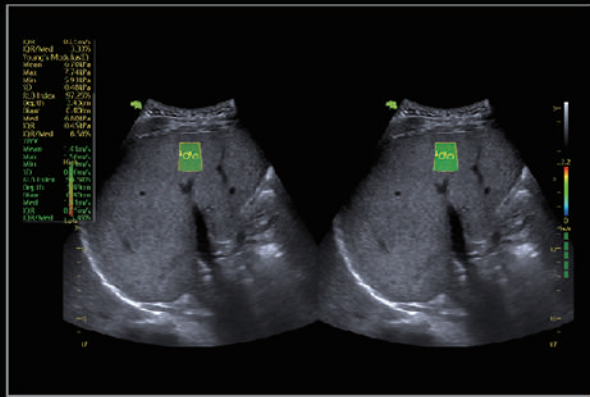


Battery Pack

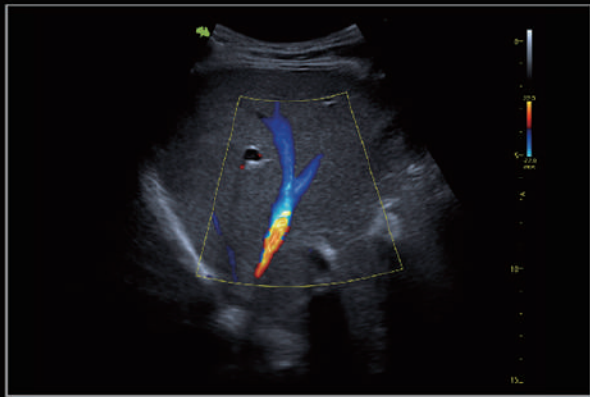
Backup battery inside the system supports 60-minute more working time for each pack of battery .



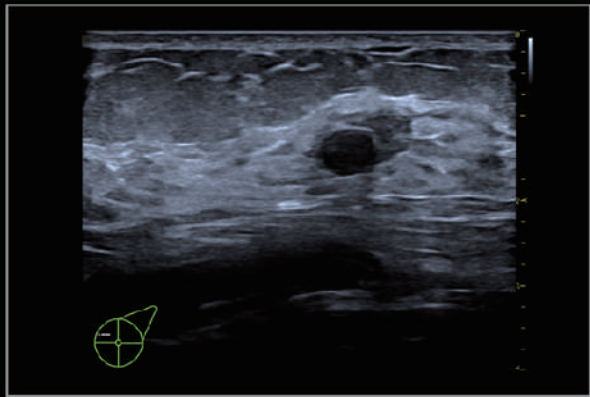
Image Gallery



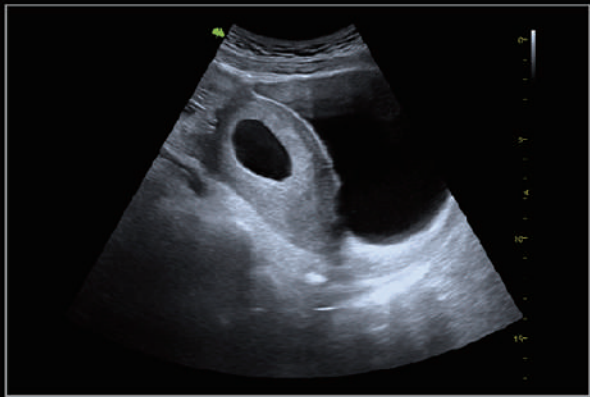
Liver Vshear



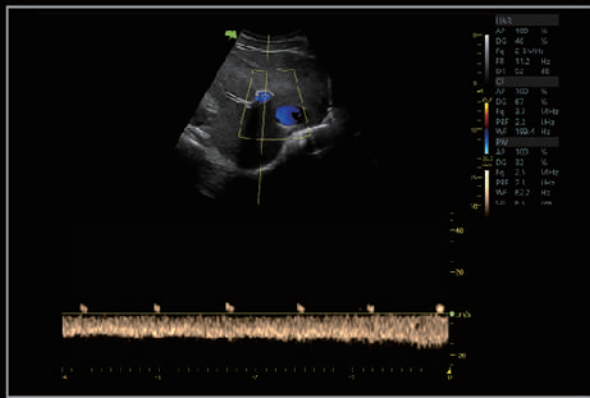
Liver CF



Breast 2D



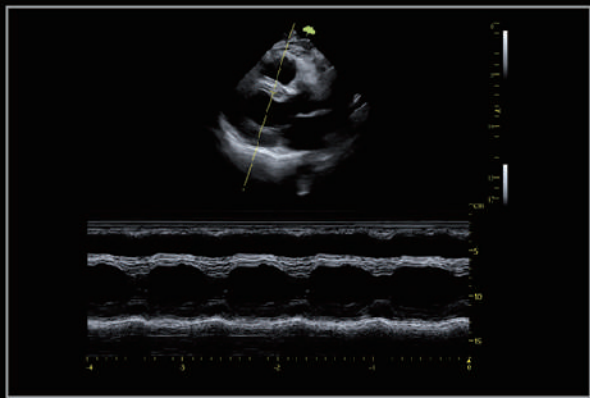
Early pregnancy



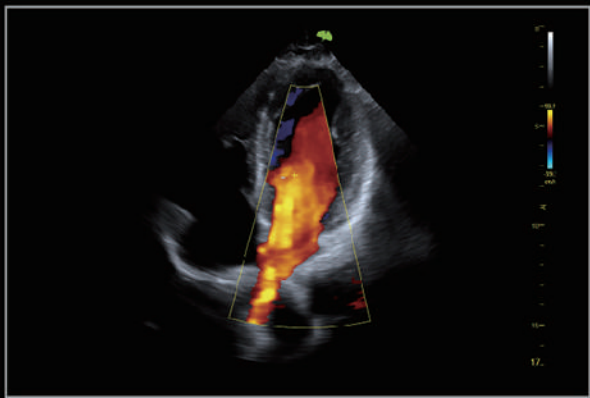
Liver PW



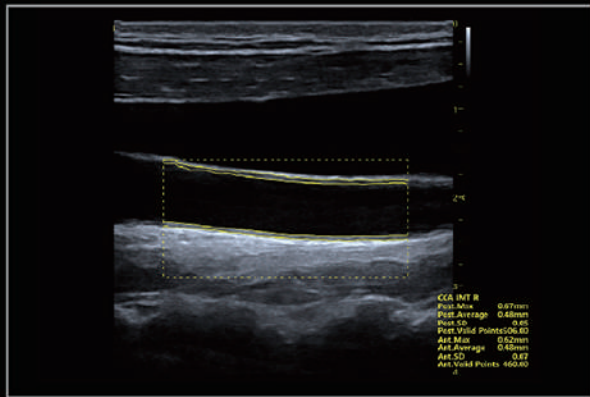
Kidney VFlow



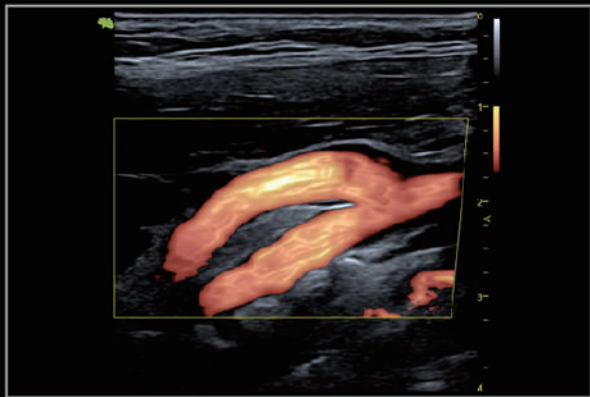
Cardiac M Mode



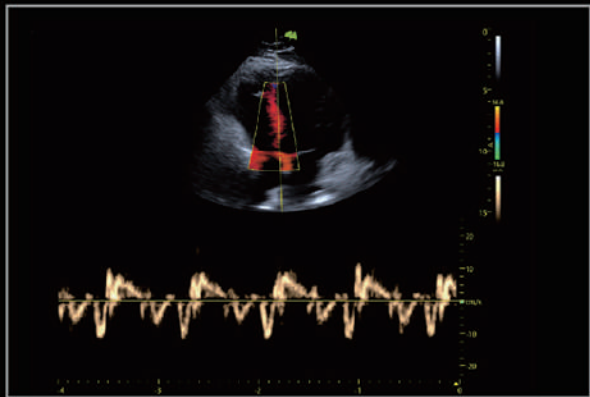
Cardiac CF



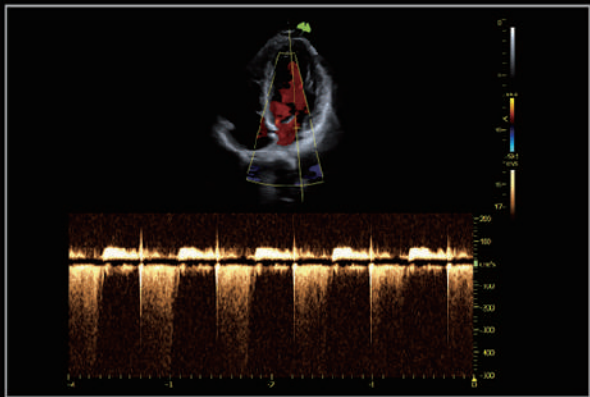
Carotid Auto IMT



VLuminous Flow



Myocardium TDI



Cardiac CWD