

Versana Essential™

Care with confidence





Simple, effective imaging for a broad range of patients

The Versana Essential ultrasound system helps you provide world-class care with no compromise on quality. This simple, effective system has broad applicability and is a great fit for private clinics, General Practitioner (GP) offices and shared service environments as it is affordable and enables comprehensive scanning capability with image quality that ranks with the best in its class.

The system is built to perform reliably, day after day, and comes backed with robust GE HealthCare service and support coverage for your peace of mind.

Simple. Effective. Accessible.
World-class ultrasound designed for peace of mind.



Excellent image quality



Time-saving clinical software for liver and thyroid assessment*



Fast boot up,* a highly responsive CPU* and a large 21.5" LCD display*



A wide variety of new probes*



Expert service and support



Flexible financing options

*Available on Versana Essential R2.

A partner you can trust

Reach new levels of excellence in diagnostics and reporting

Versana Essential is designed with reliably excellent GE HealthCare imaging technology that allows you to obtain clear images to supplement physical examinations and better tailor your care plan. It is well suited for abdominal, OB/GYN, musculoskeletal, cardiovascular, and small parts exams and has functionalities found on our most advanced systems.

- Enhanced 3D/4D performance with **V-Live***
- Define structure borders clearly with **CrossXBeam™**
- Evaluate blood flow for possible vessel-wall irregularities and more with **B-Flow**, **B-Flow Color**, and **Power Doppler Imaging**

Expert, dependable service and support

- **Optional battery*** ensures power keeps flowing should you need to move from room to room
- Easy **e-Delivery*** of software updates
- **Probe Check*** evaluates probe element performance, facilitating system maintenance
- Enjoy peace of mind with **multi-year service coverage** from GE HealthCare experts¹



*Available on Versana Essential R2.

1. Warranty and remote diagnostic offerings may vary by country or region. Please check with your local GE HealthCare representative.

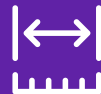
A complete solution

Confident clinical decision making for quick referrals

Key features on Versana Essential allow you to enjoy a streamlined workflow and greater productivity. You can also count on clinical support and service excellence to help you get the most out of your system.



Optimize images while scanning with *Whizz*



SonoBiometry enables automated fetal measurements



Enhance or suppress the color flow signal with *Whizz Color Flow**



Automated tools enable fast, high-volume scanning



Utilize anatomy specific *productivity packages* that leverage LI-RADS® and TI-RADS™



Measure intima-media thickness with *Auto IMT*



Obtain desired scan plane with reference tool *Scan Coach*



Simplify system set-up, and product training with *My Trainer* onboarding tool



Report templates to standardize workflow*



Web-based products and *clinical tutorials* help you advance your skills¹



Create custom exam protocols and standardized workflows with *Scan Assistant*



Easily compare current and prior exams and track treatment progress with *Follow-Up Tool*

*Available on Versana Essential R2.

1. Local educational offerings may vary from region to region.



Check out these convenient features

Flexible monitor



Large 21.5" LCD display*

Connectivity:
VGA, HDMI, USB,
ethernet, wireless
and Bluetooth*

Ergonomics:
Small footprint.
Lightweight. Front
and rear handles for
easy maneuvering

Front-facing
probe connectors for
easy access

360 degree directional wheels.
Easy lock and release mechanism

Gel holder



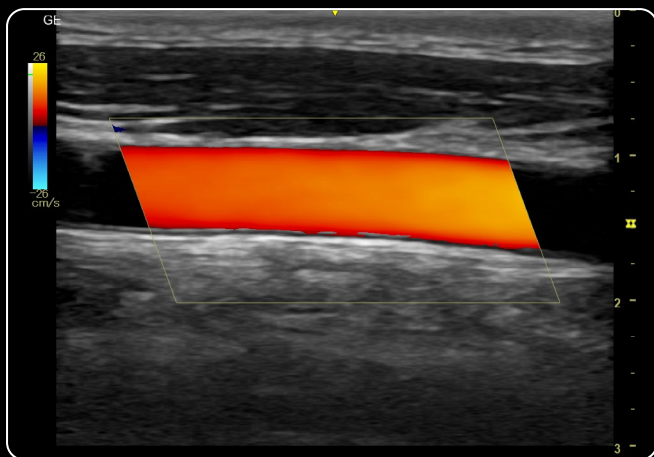
Multiple probe
holders

Optional battery*:
Helps ensure power
keeps flowing

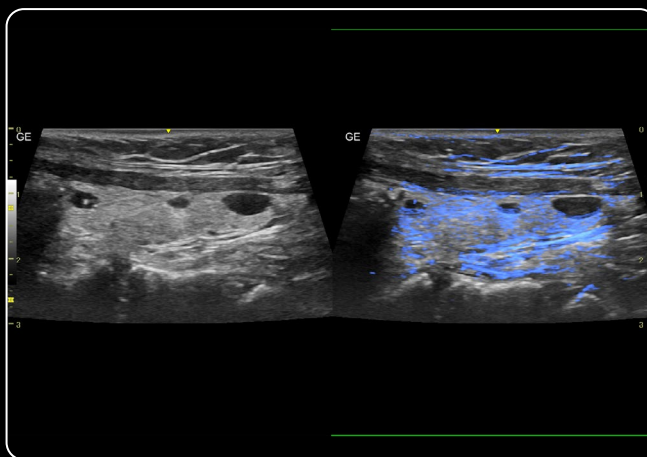


*Available on Versana Essential R2.

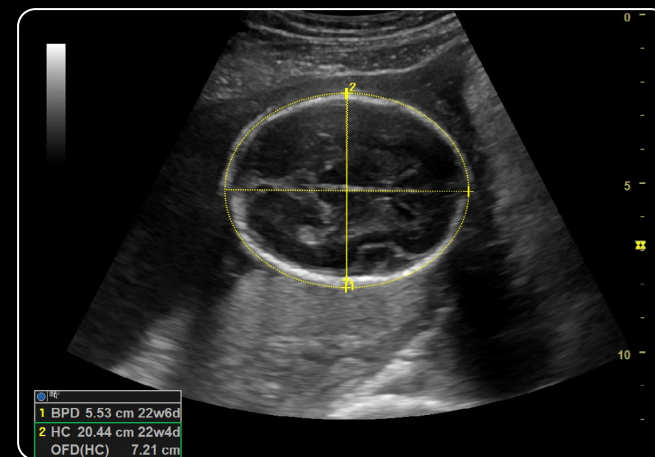
Image gallery



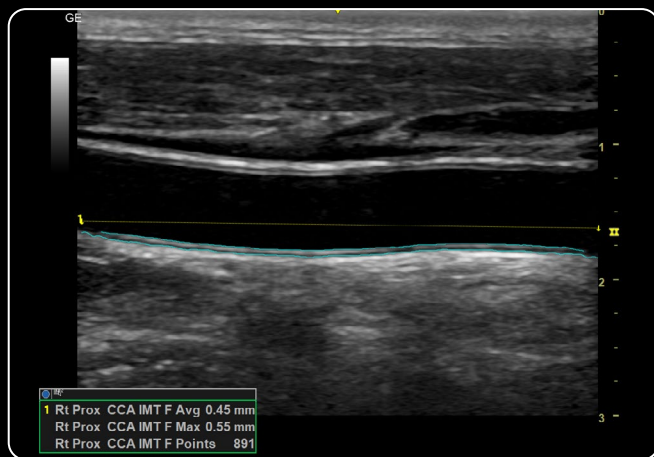
Common carotid artery Color Flow – L6-12-RS



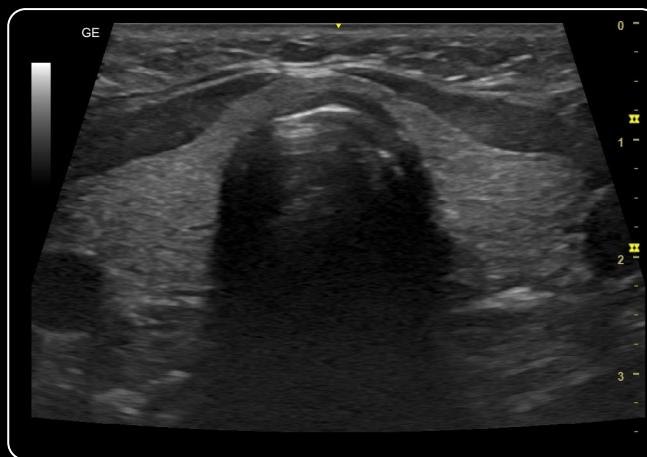
Thyroid Follow Up Tool – L6-12-RS



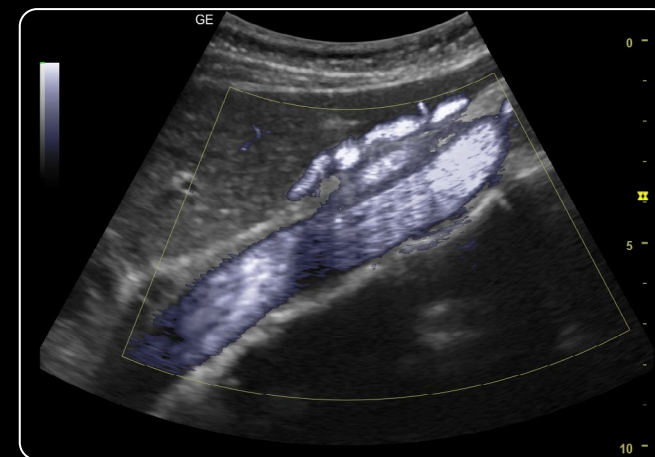
Biparietal diameter Sonobiometry – 4C-RS



CCA Auto IMT – L6-12-RS



Thyroid Virtual Convex – L6-12-RS

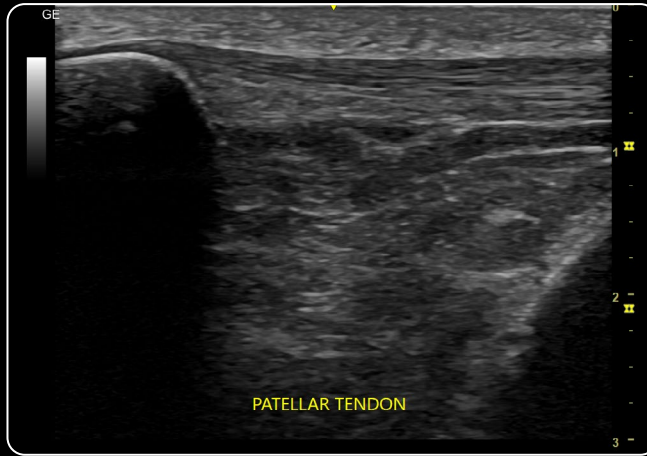


Abdominal aorta B-Flow Color – 4C-RS

Image gallery



Fetal profile – RAB2-6-RS



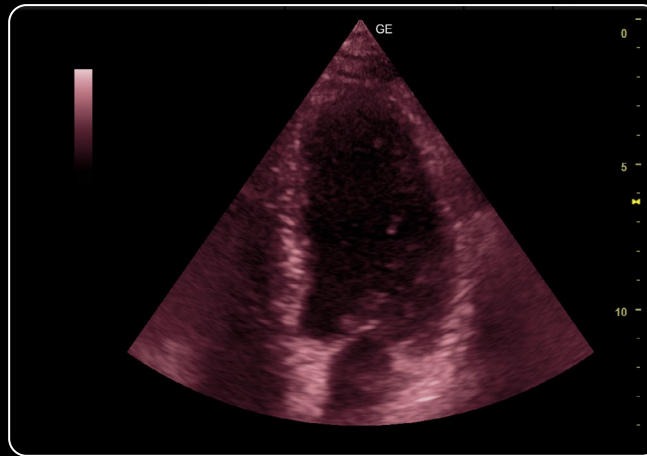
Patellar tendon – L6-12-RS



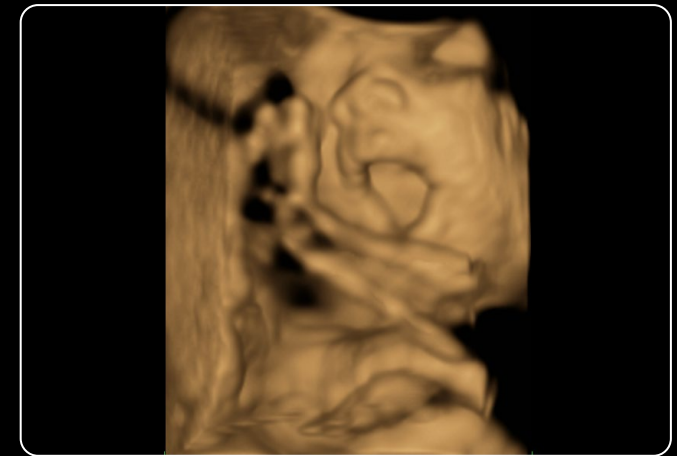
Abdomen/pancreas – 8C-RS



3D/4D fetal face V-Live – RAB2-6-RS



Apical left ventricle Color Maps – 3Sc-RS



Fetal yawn – RAB2-6-RS

Ultrasound that suits you today and grows with you

The Versana Essential platform is designed to suit your practice today and in the future. Build your diagnostic confidence with a range of transducers and applications that can enhance the amount of information you see during patient exams.

The expanded probe family includes:

- **E8CS-RS*** – a curved array micro convex endocavitary ultrasound transducer that can be applied to women's health applications, including OB/GYN, urological, and endocavitary images
- **6S-RS*** – a phased array ultrasound transducer designed for pediatric cardiac, adult cardiac, and abdominal ultrasound applications
- **8C-RS** – micro convex ultrasound transducer that is useful across a broad range of applications including pediatric and neonatal
- **RAB2-6-RS** – curved array 3D/4D probe for resolution with OB imaging

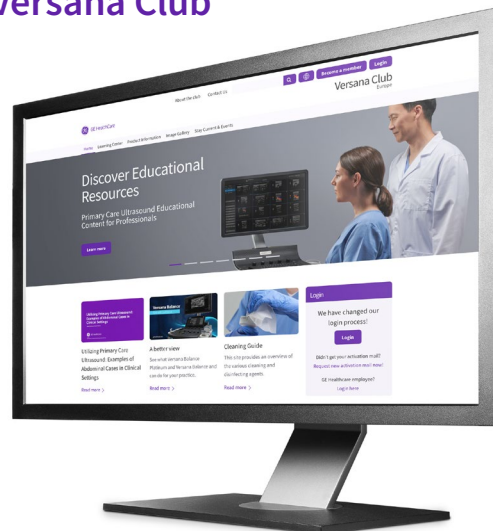
Advance your ultrasound skills with Versana Club

Versana Club offers resources to help you build your skills, network with others and share your ultrasound knowledge.

Membership perks include:

- Image-sharing with peers around the world
- Web-based video tutorials and other educational offerings
- Information on Versana service solutions and products
- Articles on ultrasound and patient care

Register now at www.versanaclub.net



*Available on Versana Essential R2.

Products mentioned in the material may be subject to government regulations and may not be available in all countries. Shipment and effective sale can only occur after approval from the regulator. Please check with local GE HealthCare representative for details.

© 2024 GE HealthCare.

Versana Essential and CrossXBeam are trademarks of GE HealthCare. LI-RADS and TI-RADS are trademarks of American College of Radiology. The Bluetooth word mark and logos are registered trademarks owned by Bluetooth SIG, Inc. GE is a trademark of General Electric Company used under trademark license.

September 2024 JB30846XX

