

Versana Essential™

Care with confidence





Offer your patients the benefit of world-class ultrasound

In your OB/GYN practice, you hold the hopes of women and their babies in your hands every day. We understand that the demands of your practice are unique, and that you are ready to offer your patients the benefit of world-class ultrasound. The Versana Essential ultrasound system helps you provide world-class care with no compromise on quality.

This simple, effective system is a great fit for your practice as it is affordable and enables comprehensive scanning capabilities with image quality that ranks with the best in its class. The system is built to perform reliably, day after day, and comes backed with robust GE HealthCare service and support coverage for your peace of mind.

Simple. Effective. Accessible.
World-class ultrasound designed for peace of mind.



Excellent image quality



V-Live* for enhanced 3D/4D imaging during fetal scans



Fast boot up,* a highly responsive CPU* and a large 21.5" LCD display*



A wide variety of new probes*



Expert service and support



Flexible financing options

*Available on Versana Essential R2.

A partner you can trust

Reach new levels of excellence in diagnostics and reporting

Versana Essential is designed with reliably excellent GE HealthCare imaging technology that allows you to obtain clear images to better tailor your care plan. V-Live^{*}, which allows you to enhance 3D/4D imaging during fetal scans, makes this system particularly well-suited for OB/GYN practices, and the system has functionalities found on our most advanced systems.

- Define structure borders clearly with **CrossXBeam™**
- Examine fetal vasculature in vessels including umbilical cord, Circle of Willis, renals, and fetal echocardiography with **Color Doppler**

Expert, dependable service and support

- **Optional battery^{*}** ensures power keeps flowing should you need to move from room to room
- Easy **e-Delivery^{*}** of software updates
- **Probe Check^{*}** evaluates probe element performance, facilitating system maintenance
- Enjoy peace of mind with **multi-year service coverage** from GE HealthCare experts¹



^{*}Available on Versana Essential R2.

1. Warranty and remote diagnostic offerings may vary by country or region. Please check with your local GE HealthCare representative.

A complete solution

Confident clinical decision making for quick referrals

Key features on Versana Essential allow you to enjoy a streamlined workflow and greater productivity. You can also count on clinical support and service excellence to help you get the most out of your system.



SonoBiometry enables automated fetal measurements



Obtain desired scan plane with reference tool
Scan Coach OB/GYN



Optimize images while scanning with *Whizz*



Enhance or suppress the color flow signal with *Whizz Color Flow*^{*}



Automated tools enable fast, high-volume scanning



Report templates to standardize workflow^{*}



Put bigger smiles on patient faces with *V-Live*^{*} which gives you beautiful images that allow you to clearly follow baby's development



Create custom exam protocols and standardized workflows with *Scan Assistant*



Simplify system set-up, and product training with *My Trainer* onboarding tool



Web-based products and *clinical tutorials* help you advance your skills¹



Easily compare current and prior exams and track treatment progress with *Follow-Up Tool*

^{*}Available on Versana Essential R2.

¹. Local educational offerings may vary from region to region.



Check out these convenient features

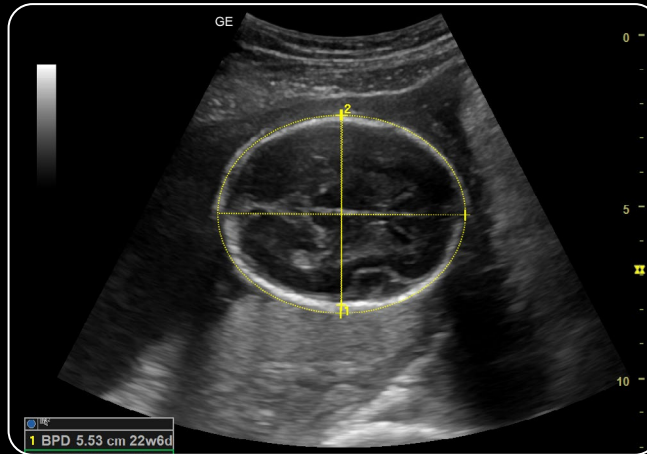


*Available on Versana Essential R2.

Image gallery



3D/4D fetal face with V-Live* – RAB2-6-RS



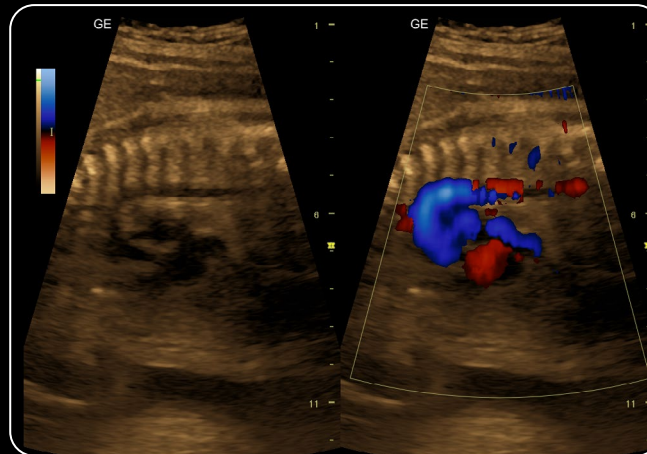
SonoBiometry BPD – 4C-RS



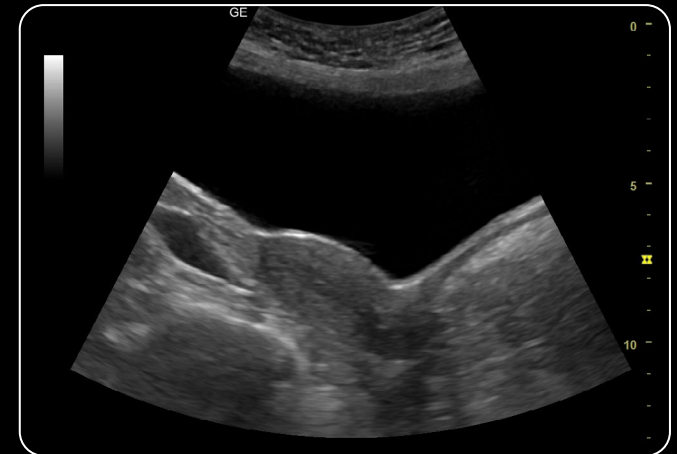
3D/4D – RAB2-6-RS



Fetal profile/body – 4C-RS

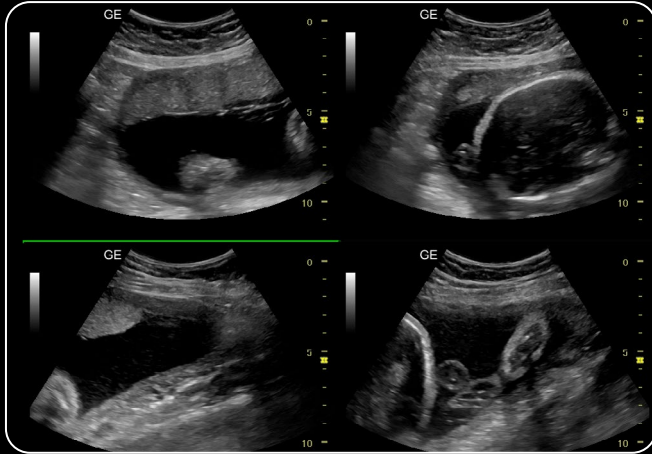


Dual screen fetal echo with color Doppler – RAB2-6-RS

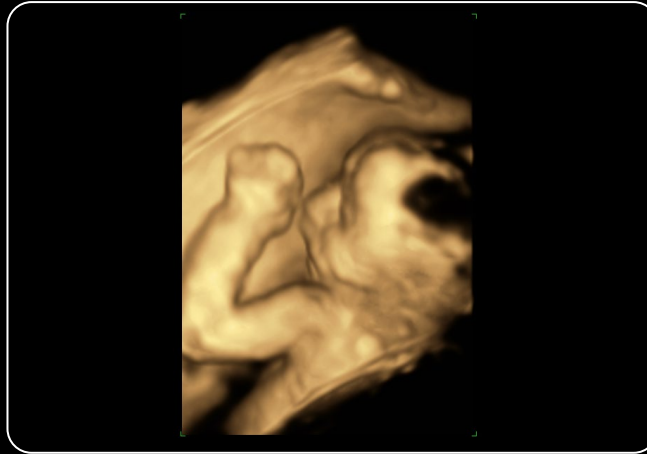


Longitudinal uterus – 4C-RS

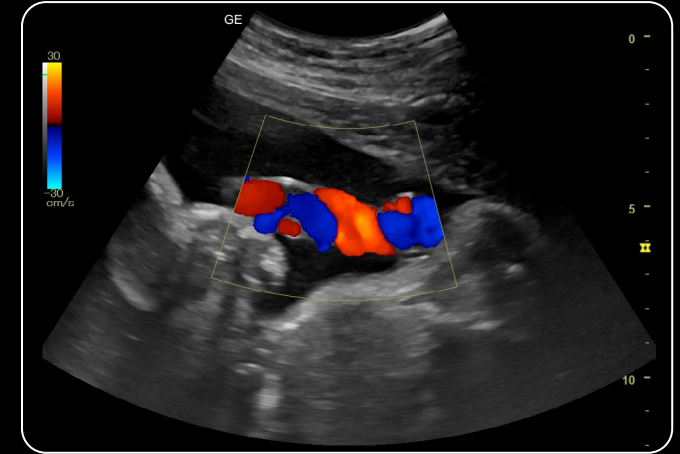
Image gallery



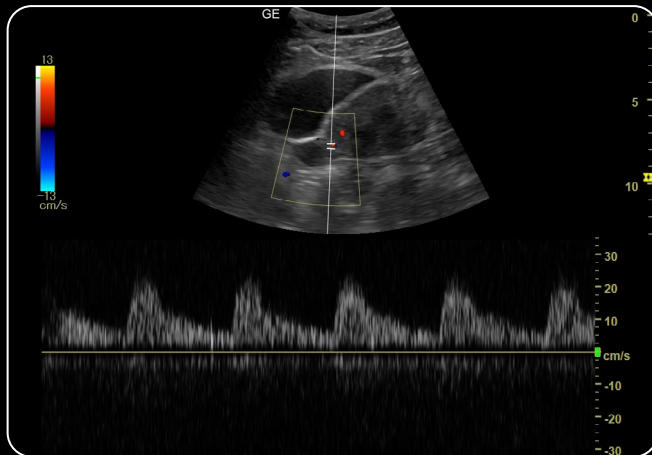
Quad screen AFI – RAB2-6-RS



3D/4D – RAB2-6-RS



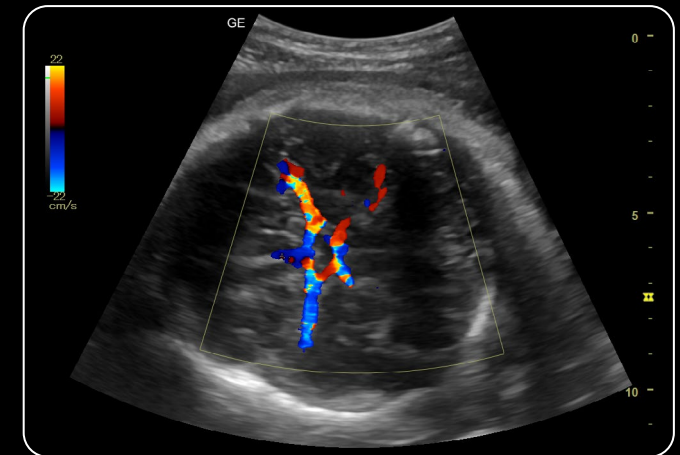
Umbilical cord with color Doppler – RAB2-6-RS



Ovarian Pulsed Wave Doppler – 4C-RS



Nose and lips – 4C-RS



Circle of Willis with color Doppler – 4C-RS

Ultrasound that suits you today and grows with you

The Versana Essential platform is designed to suit your practice today and in the future. Build your diagnostic confidence with a range of transducers and applications that can enhance the amount of information you see during patient exams.

The expanded probe family includes:

- **4C-RS** – wide band convex array probe for near-field resolution and detail definition with abdominal, OB/GYN and pediatric imaging
- **E8Cs-RS** – micro convex endocavity probe with wide field of view
- **RAB2-6-RS** – curved array 3D/4D probe for resolution with OB imaging

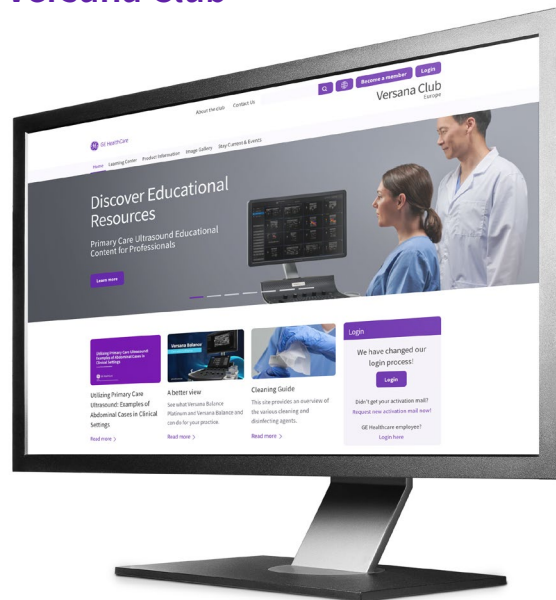
Advance your ultrasound skills with Versana Club

Versana Club offers resources to help you build your skills, network with others and share your ultrasound knowledge.

Membership perks include:

- Image-sharing with peers around the world
- Web-based video tutorials and other educational offerings
- Information on Versana service solutions and products
- Articles on ultrasound and patient care

Register now at www.versanaclub.net



*Available on Versana Essential R2.

Products mentioned in the material may be subject to government regulations and may not be available in all countries. Shipment and effective sale can only occur after approval from the regulator. Please check with local GE Healthcare representative for details.

© 2024 GE Healthcare.

Versana Essential and CrossXBeam are trademarks of GE Healthcare. The Bluetooth word mark and logos are registered trademarks owned by Bluetooth SIG, Inc. GE is a trademark of General Electric Company used under trademark license.

September 2024 JB30845XX

